

**VILLAGE OF DOWNERS GROVE**  
**REPORT FOR THE VILLAGE COUNCIL MEETING**  
**SEPTEMBER 14, 2010 AGENDA**

SUBJECT:	TYPE:	SUBMITTED BY:
Traffic Modifications – No Turn On Red, Main Street at Maple Avenue	✓ Resolution Ordinance Motion Discussion Only	Nan Newlon, P.E. Director of Public Works

**SYNOPSIS**

An ordinance has been prepared to amend sections of the Municipal Code concerning reducing No Turn On Red (NTOR) restrictions at the Main Street and Maple Avenue intersection.

**STRATEGIC PLAN ALIGNMENT**

The Five Year Plan and Goals for 2010-2014 identified *Quality Infrastructure and Facilities*.

**FISCAL IMPACT**

N/A

**RECOMMENDATION**

Approval on the September 14, 2010, consent agenda.

**BACKGROUND**

The current “No Turn On Red” restrictions at the Maple Ave and Main St intersection was put in place to address concerns at the time about conflicts between pedestrians and right-turning vehicles. Because these restrictions contribute to vehicular back-ups, delay and cut-through traffic staff recently reevaluated the performance of this turn restriction to determine if it remains warranted.

Based on observations in the field staff determined that the intersection geometry does not cause unexpected conflicts or sight restrictions. The pedestrian activity at this intersection is also currently also not at a level that would warrant this restriction. Based on these findings staff recommends modifying the current “No Turn on Red” at any time restriction to “No Turn on Red When Pedestrians are Present”.

This item was presented at the July 14, 2010 Transportation and Parking Commission meeting. The Commission voted unanimously to approve staff’s proposed modifications.

**ATTACHMENTS**

Meeting Minutes – TAP Commission meeting July 14, 2010

Exhibit

Ordinance

# TRANSPORTATION AND PARKING COMMISSION

## JULY 14, 2010

### MEETING MINUTES

**4. File #19-10 No Turn on Red, Main and Maple - Review.** **Mr. Fera** reported that village staff felt that the existing restrictions were too excessive for the intersection and, in fact, pedestrian activity is reduced from what it was when this restriction was put in place. The previous construction developments to the east have been completed, and less pedestrians use Main Street to reach the Metra Station. Per a question about police input, four crashes occurred from January 1, 2010 to the present, but were not related to traffic signal or turn violations. Enforcement has been very light. **Police Sgt. Gillette** reported that there still exists a sight distance issue when traveling northbound on Main Street heading towards Maple Avenue. Staff is aware of this condition. **Mr. Fera** felt the while the intersection is not as wide as we would prefer, it makes sense to restrict all the turn movements with a No Turn on Red restriction during periods when pedestrians are present, but not for the entire 24-hour period. The Commission was in support of this position.

# TAP FILE #19-10

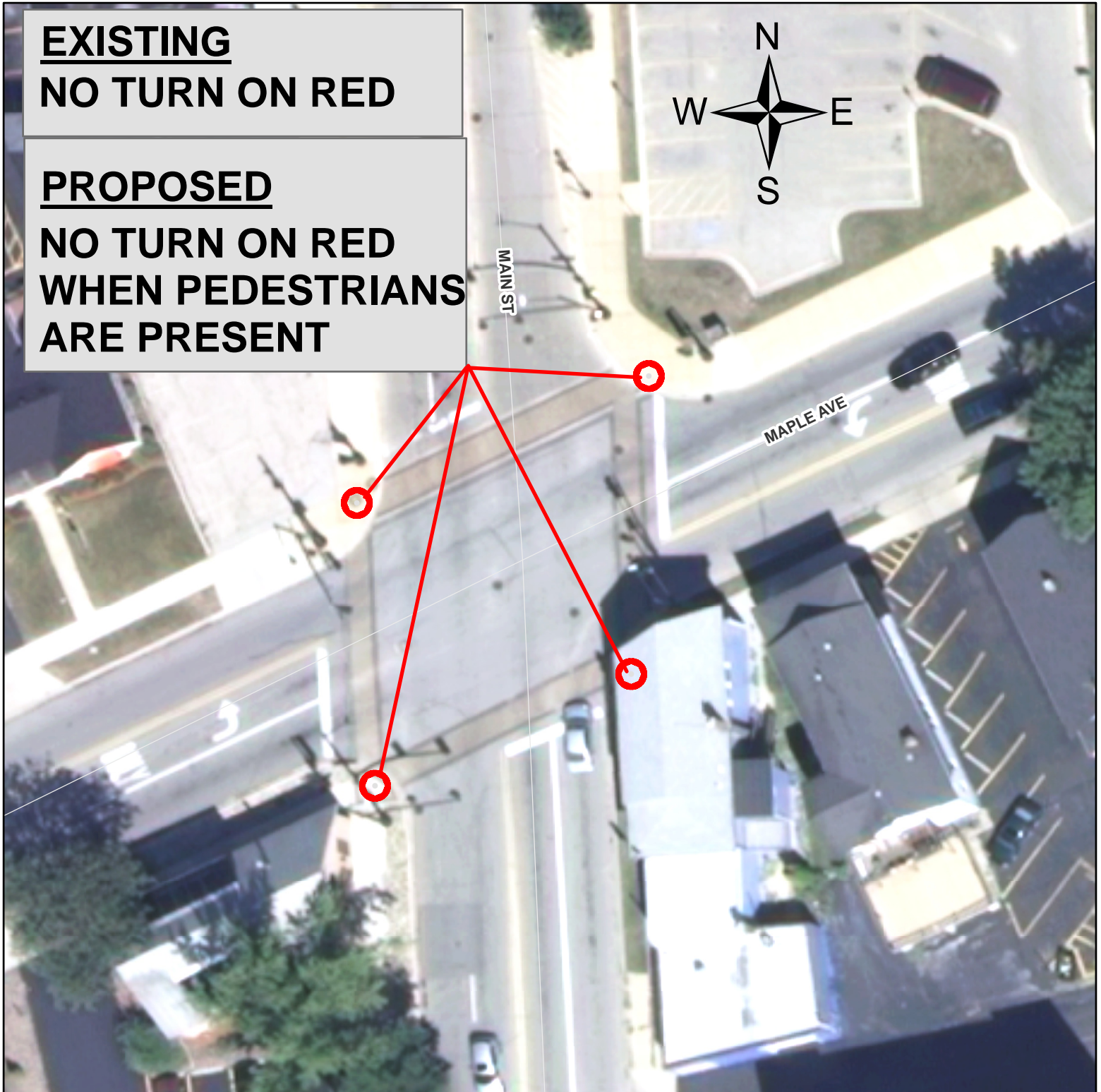
## MAIN STREET & MAPLE AVENUE

No Turn on Red Proposed Restriction-Modification

July 14, 2010

EXISTING  
NO TURN ON RED

PROPOSED  
NO TURN ON RED  
WHEN PEDESTRIANS  
ARE PRESENT



ORDINANCE NO. \_\_\_\_\_

**AN ORDINANCE AMENDING TURNING RESTRICTIONS**

BE IT ORDAINED by the Village Council of the Village of Downers Grove in DuPage County, Illinois, as follows: (Additions are indicated by **shading**/underline; deletions by ~~strikeout~~):

**Section 1. That Section 14.8. is hereby amended to read as follows:**

**14.8. "No turn on red" intersections.**

(a) On the basis of traffic investigations at the below named intersections, it is found that traffic conditions do not safely allow turns on a red light and that the following intersections should be designated as "No turn on red" intersections:

- Fairview Avenue and Lincoln Street, north and south approaches only.*
- Main Street and Burlington Avenue.*
- Main Street and Curtiss Street.*
- Main Street and Grant Street.*
- Maple Avenue and Main Street.*
- 39th Street and Fairview Avenue, west approach only.*

(b) On the basis of traffic investigations at the below named intersections, it is found that traffic conditions do not safely allow turns on a red light and that vehicles facing a steady red signal shall be prohibited from turning right after stopping at all times when pedestrians are present in the vicinity of the following intersections:

- Belmont Road and Prairie Avenue, east approach only.*
- Fairview Avenue and Hill Street, south approach only.*
- Fairview Avenue and Prairie Avenue, north approach only.*
- Maple Avenue and Main Street.*

(Ord. No. 1765, § 4; Ord. No. 1881, § 1; Ord. No. 2063, § 3; Ord. No. 2687, § 2; Ord. No. 2843, § 3; Ord. No. 2975, §§ 3, 6.)

**Section 2.** That all ordinances or parts of ordinances in conflict with the provisions of this ordinance are hereby repealed.

**Section 3.** That this ordinance shall be in full force and effect from and after its passage and publication in the manner provided by law.

\_\_\_\_\_  
Mayor

Passed:  
Published:  
Attest: \_\_\_\_\_  
Village Clerk